

# BREAST HEALTH RESOURCE GUIDE

SERVING THE MID-MISSOURI AFFILIATE AREA

Mid-Missouri Affiliate of Susan G. Komen for  
the Cure ®

3301 W Broadway, Suite C Room 107  
Columbia, MO 65203

(573)445-1905

E-mail: [office@komenmidmo.org](mailto:office@komenmidmo.org)

Website: [www.komenmidmissouri.org](http://www.komenmidmissouri.org)

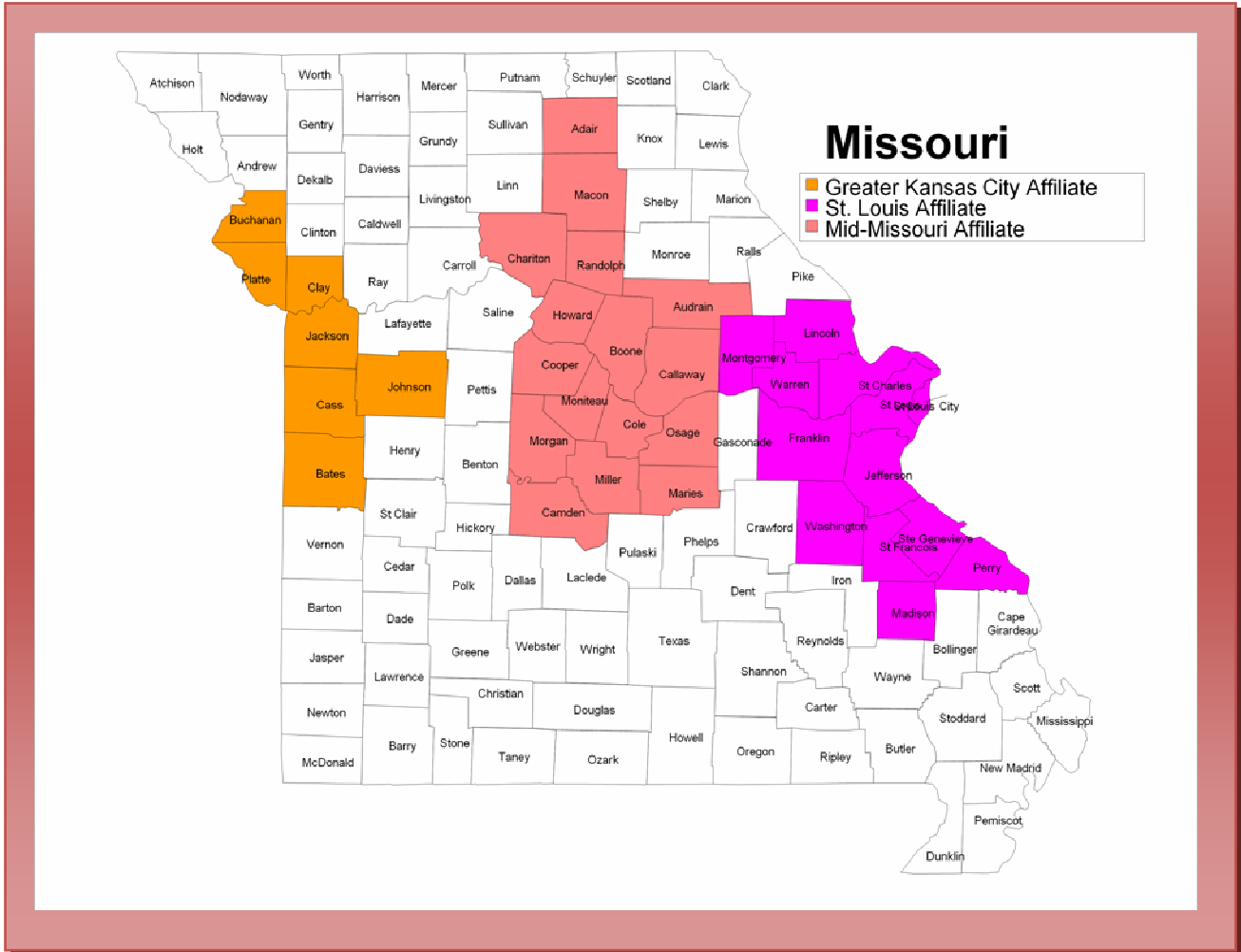
LAST UPDATED: APRIL 2010

If you find any missing or incorrect information, please contact us.  
Thank you.

## Table of Contents

Mid-Missouri Affiliate Area.....	3
Example County.....	5
COUNTY MAP.....	5
MEDICAL.....	5
POST-DIAGNOSIS.....	5
ORGANIZATIONS SERVING LOW INCOME.....	5
SOCIAL NETWORKS.....	5
INFORMATION SOURCES.....	5
Morgan County.....	6
Resources.....	11
<input type="checkbox"/> Show Me Healthy Women Program.....	11
<input type="checkbox"/> Organizations.....	13
<input type="checkbox"/> STL/Kansas City Resources.....	14

# Missouri Affiliate Area

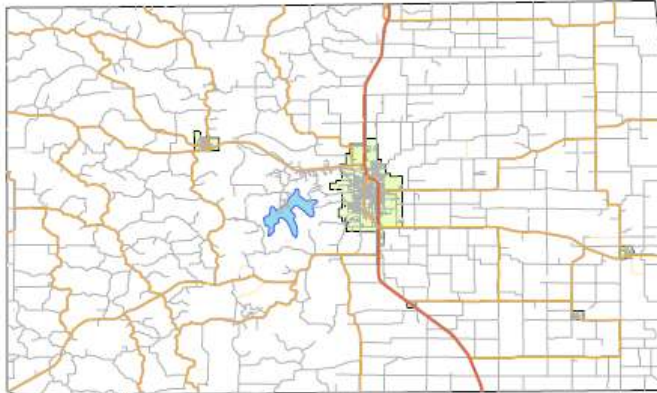


## Mid-Missouri Affiliate Area



# Example County

## COUNTY MAP



\*\*Map attributes will be listed beneath the map.

## MEDICAL

- Hospitals (Hospitals and Clinics in area)
- Federally Qualified Health Centers (FQHC)
- Mammography Centers
- Show Me Healthy Women Program Providers (SMHW)
- Cancer Centers

## POST-DIAGNOSIS

- Pharmacies
- Support Groups
- Accessories (Lymphedema garments, Wigs, Breast Prosthesis)
- Transportation (Public transportation)

## ORGANIZATIONS SERVING LOW INCOME

- Health Department

## SOCIAL NETWORKS

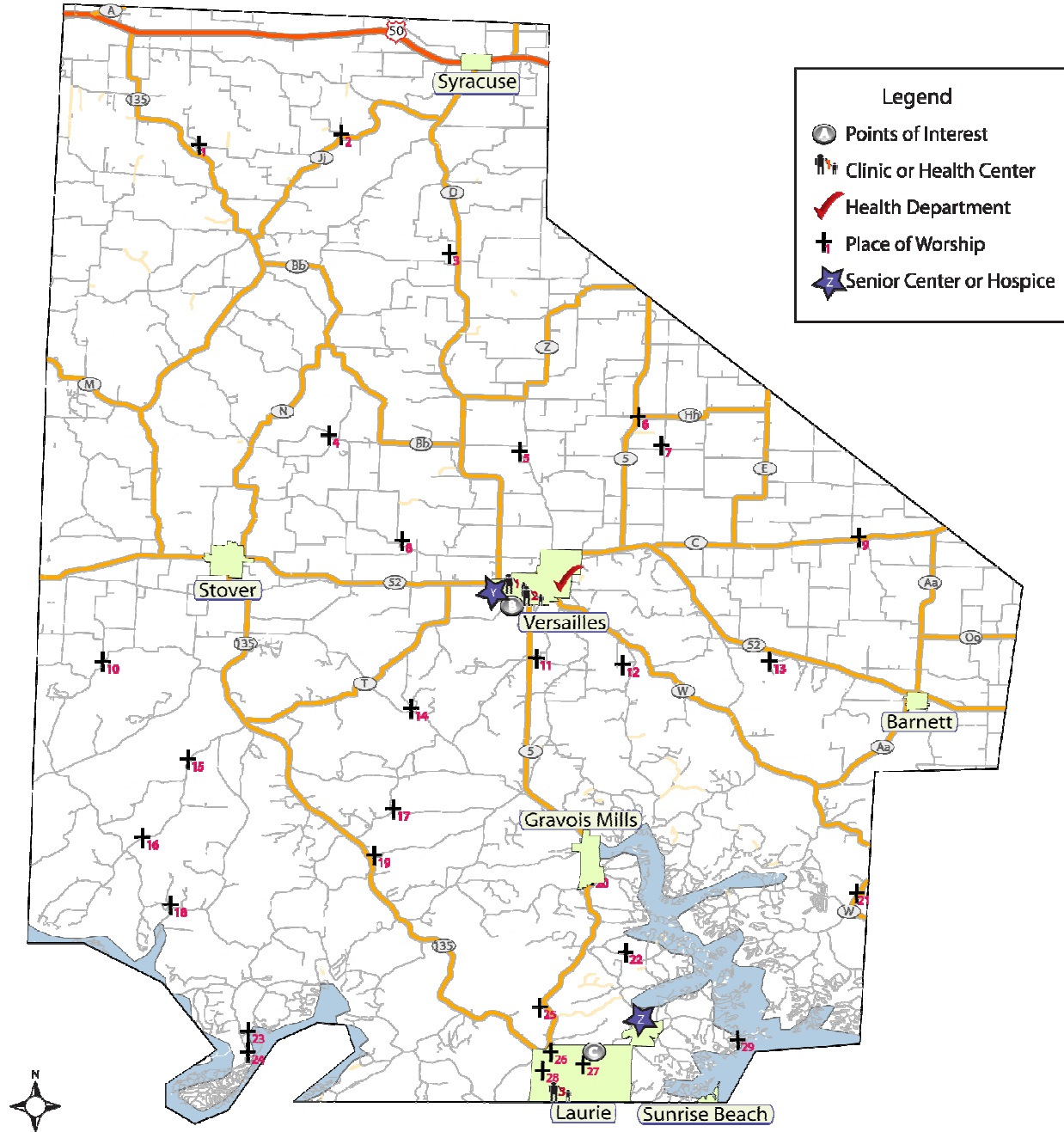
- Senior Centers
- Support Groups

## INFORMATION SOURCES

- American Cancer Society
- Libraries
- CIS (hotline)

# Morgan County

## COUNTY MAP



## Morgan County Extended Legend

---

### Health Department

1 Morgan County Health Center

### Points of Interest

A Good Sheppard Care Center

B Laurie Care Center

### Senior Centers or Hospice

Y Versailles Senior Center

Z West Side Senior Center

### Clinics or Health centers

1 St. Mary's Versailles Medical Clinic

2 Capital Region Medical Clinic

3 Westlake Medical Center

### Places of Worship

1 Bethlehem Church

2 Mount Olive Church

3 Mount Carmel Church

4 Bethlehem Church (2)

5 Freedom Church (Historical)

6 Prairie View Church

7 Mount Zion Church

8 Mount Nebo Church

9 Hopewell Church

10 Pleasant Union Church

11 West Union Church

12 Church Oak

13 Big Rock Church

14 Richie Church

15 Mount Calvary Church

16 Trinity Chapel Church

17 Locus Church

18 Little Buffalo Church

19 New Bethel Church

20 Saint Patrick's Church

21 Union Church

22 Community Chapel

23 Christian Church of the Ozarks

24 Ivy Bend Mission Church

25 Evansview Church of Christ

26 Shrine of Saint Patrick Church

27 Saint Patrick's Church

28 Ozark Chapel

29 Millstone Church

### MEDICAL

- Hospitals

St. Mary's Versailles Medical Clinic  
801 Kidwell Dr  
Versailles, MO 65084  
(573) 378-5454

Capital Region Medical Center-Versailles  
901 Kidwell Dr  
Versailles, MO 65084  
(573) 378-4666

Westlake Medical Center  
401 N Main St, Suite 1  
Gravois Mills, MO 65037  
(573) 374-5800

Jack Gunn Free Clinic  
901 Kidwell Dr  
Versailles, MO 65084  
(573) 378-4817  
Toll Free: (866) 803-4657

- Federally Qualified Health Centers

- For the FQHC closest to your home, go to [findahealthcenter.hrsa.gov](http://findahealthcenter.hrsa.gov) and enter your address.

- Mammography Centers  
St. Mary's Versailles Medical Clinic  
801 Kidwell Dr  
Versailles, MO 65084  
(573) 378-5454

- Show Me Healthy Women Program Providers (SMHW)
  - Visit [www.dhss.mo.gov/BreastCervCancer/ProviderLists.html](http://www.dhss.mo.gov/BreastCervCancer/ProviderLists.html) for current providers
  - For a description of the SMHW program, please see Appendix

- Cancer Centers  
None

#### POST-DIAGNOSIS

- Pharmacies  
Wal-Mart Pharmacy  
Missouri Hwy 52 W  
Versailles, MO 65084  
(573) 378-5421

Laurie Pharmacy INC 901 Kidwell Dr Versailles, MO 65084 (573) 378-4661
---

- Support Groups  
None

- Accessories
  - Look Good Feel Better Program by American Cancer Society  
**Look Good Feel Better** is a free program. Trainers show participants how to rejuvenate their looks and participants receive a “tool kit” of products. Wigs, turbans, and scarves are available to try on and keep. For more information and locations near you call 1-800-395-LOOK or visit [www.lookgoodfeelbetter.org](http://www.lookgoodfeelbetter.org)

None

- Transportation
  - OATS, Inc.  
Mid-MO Regional Office  
Jack Heusted, Regional Director  
2501 Maguire Blvd., Ste. 103  
Columbia, MO 65201  
(573) 449-3789  
[jackh@oatstransit.org](mailto:jackh@oatstransit.org)  
[www.oatstransit.org](http://www.oatstransit.org)  
No fees, donations accepted  
Eligibility: Age 60 or older, age 18-59 with a permanent disability, and the rural general public  
Services available: personalized door-to-door services, transportation provided on a scheduled basis, priority given to elderly and disabled.  
Schedule for OATS services in Morgan County below: To schedule a ride, call the contact number in your town or the regional office above.

## **MONDAYS**

Morgan County with Moniteau County to Boonville 1st Monday each month

Morgan County with Moniteau County to Columbia 3rd Monday each month

## **TUESDAYS**

Ivy Bend to Osage Beach or Sedalia 1st Tuesday each month

Stover, Versailles, Laurie to Osage Beach 3rd Tuesday each month

## **WEDNESDAYS**

Morgan County with Moniteau County to Jefferson city

## **THURSDAYS**

Morgan County to Versailles

## **FRIDAYS**

Versailles In-Town

To schedule a ride on any of these routes, call the contact number in your town:

Versailles	Loeta May	573-378-6777
Ivy Bend	Juanita Balding	573-372-2399
Stover	Shirley Ferguson	573-377-2598
Laurie, Sunrise Beach	Margaret Dean	573-374-5968

For general county information, please call Margaret Dean at 573-374-5968.

## **ORGANIZATIONS SERVING LOW INCOME**

- Health Department  
Morgan County Health Center  
104 W Lafayette St  
Versailles, MO 65084  
(573) 378-5438  
[www.morganhealth.org](http://www.morganhealth.org)

## **SOCIAL NETWORKS**

- Senior Centers  
None
- Support Groups  
None

## **INFORMATION SOURCES**

- American Cancer Society  
1 (800) 227-2345  
[www.cancer.org](http://www.cancer.org)

Cancer Specialist available 24 hours everyday of the year to answer questions, explain what your diagnosis means, tell you about programs that are offered by your area American Cancer Society office, and give information about other organizations who offer relevant programs (including utility and transportation assistance).

- Jefferson City Office  
2413 Hyde Park Rd  
Jefferson City, MO 65109  
(573) 635-4821

- Libraries

Morgan County Public Library  
102 N Fisher St  
Versailles, MO 65084  
(573) 378-5319

Wood Place Public Library  
501 S Oak St  
California, MO  
(573) 796-2642

- CIS (hotline)

- Contact National Cancer Institute Cancer Information Service (CIS) at 1 (800) 422-6237

## RESOURCES

Possible Resources for receiving free or reduced cost are available all over the service area. Some of options available include:

### SHOW ME HEALTHY WOMEN PROGRAM

**Show Me Healthy Women** is a program designed to help cure and eliminate breast cancer. This is done through free to low cost breast and cervical cancer screening to those living in Missouri who meet the requirements of the program. If diagnosed through this program they maybe eligible for free treatment through Medicaid.

Services available depending on age and income include:

- Free Mammograms (Only those 50 years and older without Medicare Part B)
- Free Clinical Breast Exams (CBE)
- Free Pelvic Exams
- Free Pap Tests

Certain guideline restrictions:

- Must be over 35 years old
- Limited or no health coverage
- Not eligible for Medicaid or Medicare
- Income below the 200% federal poverty level. See chart below for annual income.

Size of household	SMHW Annual	SMHW monthly	SMHW weekly
1	\$21,660	\$1,805.00	\$416.54
2	\$29,140	\$2,428.33	\$560.38
3	\$36,620	\$3,051.67	\$704.23
4	\$44,100	\$3,675.00	\$848.08
5	\$51,580	\$4,298.33	\$991.92
6	\$59,060	\$4,921.67	\$1,135.77
7	\$66,540	\$5,545.00	\$1,279.62
8	\$74,020	\$6,168.33	\$1,423.46
<b>Each additional person, add:</b>	\$7,480	\$623.33	\$143.85

Source: *Federal Register*, January 23, 2009  
[aspe.hhs.gov/poverty/09poverty.shtml](http://aspe.hhs.gov/poverty/09poverty.shtml)

Annual is correct. Other amounts have been rounded up.

- If between the ages of 35-49 are eligible for:
  - Pelvic exam, Pap test and Clinical Breast Exam (CBE)
  - Diagnostic breast services if CBE results are suspicious for cancer.
  - Diagnostic cervical services if initial/follow-up Pap test was abnormal and was provided by a participating provider or through outside referrals with Pap test results of High Grade SIL or worse.
  - Not eligible for mammograms

- If between ages of 50-64 without Medicare Part B are eligible for:
  - Clinical Breast Exam
  - Mammogram
  - Pelvic exam
  - Pap Test
- Cervical cancer screenings for women who have had a hysterectomy:
  - Due to cervical cancer or dysphasia are eligible for Clinical Breast Exam, pelvic examination and Pap test.
  - Due to any reason other than cervical cancer or dysphasia are eligible for one Pap test and pelvic examination to determine the absence or presence of the cervix.
  - Due to conditions other than cervical cancer or dysphasia and the cervix is absent are eligible for a CBE.

There is **NO guarantee eligibility for free screening** services through Show Me Healthy Women provider. Contact the provider close to you to find out more about eligibility, making an appointment, and necessary documentation.

Providers of Show Me Healthy Women are always changing due to funds fluctuation, therefore it is a good idea to contact the provider to make an appointment and find out information prior to going in.

For providers near you:

- Alphabetical Listing: [www.dhss.mo.gov/BreastCervCancer/Providerlist.xls](http://www.dhss.mo.gov/BreastCervCancer/Providerlist.xls)
- Listing by county: [www.dhss.mo.gov/BreastCervCancer/ProviderList/ProviderListMap.html](http://www.dhss.mo.gov/BreastCervCancer/ProviderList/ProviderListMap.html)

Note: Non-U.S. citizens may receive screening but they will not be eligible for the cancer treatment through Medicaid.

For more information contact:

- National Cancer Institute Cancer Information Service (CIS) at 1-800-422-6237, press option “1”
- Bureau of Cancer and Chronic Disease Control: Show Me Healthy Women Program (SMHW)  
Missouri Department of Health and Senior Services  
PO Box 570, Jefferson City, MO 65102-0570 Telephone: 573-522-2845, Fax: 573-522-2899,  
Email: [info@dhss.mo.gov](mailto:info@dhss.mo.gov)

This information has been retrieved from [www.dhss.mo.gov/BreastCervCancer/Eligibility.html](http://www.dhss.mo.gov/BreastCervCancer/Eligibility.html) on October 14, 2009.

- **MedZou Clinic** is a student run medical clinic that provides free healthcare to the uninsured in Columbia. The Clinic uses a combination of medical students and faculty (doctors, nurses and social workers) to provide quality health care for those that come to the clinic.  
Central Missouri Community Action (CMCA) Building, 400 Wilkes Blvd, Columbia, MO 65201  
Open on Thursdays from 6:00 PM - 9:00 PM

For more information contact:

- |   |   |
|---|---|
| <ul style="list-style-type: none"> <li>• <b>Natalie Fieleke</b><br/><i>Senior Information Specialist</i><br/>School of Medicine - Communication &amp; Innovation<br/>Phone: 573-884-7541<br/>Fax: 573-884-4808<br/>Email: <a href="mailto:fileken@health.missouri.edu">fileken@health.missouri.edu</a></li> </ul> | <ul style="list-style-type: none"> <li>• <b>Chris Gu</b><br/><i>Medical Student</i><br/>School of Medicine - Class of 2012<br/>Email: <a href="mailto:chris.gu@mizzou.edu">chris.gu@mizzou.edu</a></li> </ul> |
|---|---|

- **Ellis Fishcel Cancer Center** is a part of the University of Missouri Health System located in Columbia, Missouri. Each year they help thousands of people with their comprehensive cancer prevention, detection, and treatment services. Ellis Fischel works with all types of cancer. The Margaret Proctor Mulligan Breast Health and Resource Program focuses on breast health. The services provided by this program include screening and diagnostic mammograms, breast ultrasounds, lymphedema education and therapy, support groups, prosthetic and cosmetic support, a resource library and a second opinion breast cancer clinic.
  - For more information:
    - visit [www.muhealth.org/default\\_efcc.cfm?id=74](http://www.muhealth.org/default_efcc.cfm?id=74)
    - or contact:
      - For general questions regarding breast health or breast cancer, please contact Erin Spears, Nurse Clinician at (573) 884-7718.
      - Referrals and new patients: (573) 882-8454.
      - Existing patients: (573) 882-8445
      - To schedule a mammogram: (573) 882-8511
- **Mobile Mammography Van Service** is a 44 foot van that has an examination room and a mammography suite. Mammograms, clinical breast exams and breast health educational materials are all available. The van travels throughout our affiliate area for an upcoming schedule visit [www.muhealth.org/body\\_efcc.cfm?id=1432](http://www.muhealth.org/body_efcc.cfm?id=1432) with its home base at Ellis Fischel in Columbia, Missouri. If you are interested in bringing the cancer screening van to their community can make arrangements by calling (573) 882-8511 or 888-MAM-VAN1 (888-626-8261).

## ORGANIZATIONS

- **Missouri Cancer Associates** are located in Kirksville and Columbia, Missouri and offers comprehensive cancer care services include radiation therapy, diagnostic radiology, pharmacy services, and patient support services. For more information visit their website at [www.missouricancer.com](http://www.missouricancer.com) or call us at 573-875-7081 Monday through Friday, between 8:30 a.m. and 5:00 p.m. to make an appointment.
- **American Cancer Society** for the American Cancer Society office and services available in your community visit [www.cancer.org](http://www.cancer.org) or call 1-800-ACS-2345. The different offices can have a variety of services available. Some of the services include:
  - **Look Good Feel Better** is a free public program offered by the American Cancer society for individuals with cancer. Programs are held once a month at designated locations. Visit [www.lookgoodfeelbetter.org](http://www.lookgoodfeelbetter.org) to find a location near you. During the program individuals are put into small groups and lead by a trained cosmetologist though a 12 step process on how to rejuvenate your look, they also receives a “tool kit” which is product neutral that will be used in the 12 step process. Wigs, turbans, and scarves will be available at the end to try on and keep if wanted. \*It’s also a great time to ask how to tie a scarf or turban in order to get the correct style (paper instructions are also in the small booklet that outlines the 12 step process). For more information call 1-800-395-LOOK or Visit [www.lookgoodfeelbetter.org](http://www.lookgoodfeelbetter.org).

- **Reach to Recovery** is a program is designed to help both males and females cope with their breast cancer through face-to-face visits and phone conversations with Reach for Recovery volunteers. The volunteers are all survivors and have normal productive lives now; they offer to others their knowledge, understanding, and hope. For more information about the program or to find a program near you visit In My Community on the American cancer web site at [www.cancer.org](http://www.cancer.org) or call 1-800-227-2345.
- **Road to Recovery** is a program that provides transportation to and from treatment for individuals with cancer that do not have a ride or are unable to drive themselves. Call 1-800-ACS-2345 to find out if Road to Recovery is available in your community.
- **Tender Loving Care (TLC)** is a magazine/catalog that has helpful information with products for women with cancer or cancer treatment that causes hair loss including: wigs, breast prosthesis, lymphedema garments, hairpieces, breast forms, bras, hats, turbans, swimwear, and helpful accessories at the lowest possible prices. To request a copy of TLC, call 1-800-850-9445, or visit TLC online at [www.tlcdirect.org](http://www.tlcdirect.org).
- **I Can Cope** is a free educational program for individuals facing cancer –themselves or through a friend or family member. I Can Cope classes help disprove common cancer myths and give straightforward information. For more information about I Can Cope classes in your area, call 1-800-227-2345, or visit our web site, [www.cancer.org](http://www.cancer.org). Classes are also available online visit [www.cancer.org/onlineclasses](http://www.cancer.org/onlineclasses) to take the course online.
- **National Cancer Institution (NCI)** is primarily a research institution with information for the public, health professionals and patients both on cancer in general and the research/clinical trials that NCI has performed. For more information about cancer call 1-800-4-CANCER or visit [www.cancer.gov](http://www.cancer.gov)
- **Breast Cancer National Network of Strength** is a Some of the services offered to women include:
  - **YourShoes a 24/7** breast cancer support center staffed by breast cancer survivors who know first-hand what it is like to walk in the shoes of someone who is facing the disease. To contact a breast cancer survivor at the support center call 1-800-221-2141 or go to [www.networkofstrength.org/programs/yourshoes.php](http://www.networkofstrength.org/programs/yourshoes.php) and email now.
  - **Breast Cancer Survivor Match Program** gives you the opportunity to be paired with a peer counselor who had the same diagnosis, is the same age or has experienced similar challenges as you. For more information [www.networkofstrength.org/programs/match.php](http://www.networkofstrength.org/programs/match.php)
  - **Partner Match Program** provides support and education for people while they are supporting a wife, partner or other loved one through the disease. For more information go to [www.networkofstrength.org/programs/partnermatch.php](http://www.networkofstrength.org/programs/partnermatch.php)

## STL/ KANSAS CITY RESOURCES

- **Wigs**
  - Cancer Action at (913) 642-8885 direct the donation or three locations in the greater Kansas City area